

# TRADITIONAL *MARLEN Ostomy Products*

## RE-USABLE ILEOSTOMY PRODUCTS

### SOLO® Ileostomy Unit

A one-piece unit featuring a convex mounting ring permanently sealed to the pouch. No assembly required! The pouch is constructed of odor-proof materials and has a cloth-like cover on both sides. Available in stoma sizes from 1/2" to 1-5/8" (in 1/8" increments). Requires a separate pouch closure.



**SI-2001**  
Available in beige.

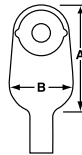
### Odour-Ban™ Ileostomy Unit

A one-piece unit featuring a convex mounting ring permanently sealed to the pouch. No assembly required. The pouch is constructed of lightweight plastic and features the patented Odour-Ban inner liner. Available in stoma sizes from 1/2" to 1-5/8" (in 1/8" increments). Requires a separate pouch closure.

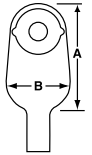


**OPV-4001**  
Available in white.

Pouch Size	Length "A"	Width "B"	Capacity
Small	8-3/4 in./22.2 cm	5 in./12.7 cm	14 oz./420 cc
Medium	9-3/4 in./24.8 cm	5-5/16 in./13.5 cm	18 oz./540 cc
Large	11 in./27.9 cm	6-1/8 in./15.6 cm	31 oz./930 cc



Pouch Size	Length "A"	Width "B"	Capacity
Small	8-3/4 in./22.2 cm	5 in./12.7 cm	14 oz./420 cc
Medium	9-3/4 in./24.8 cm	5-5/16 in./13.5 cm	18 oz./540 cc
Large	11 in./27.9 cm	6-1/8 in./15.6 cm	31 oz./930 cc



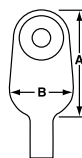
### Weight-Less™ Odour-Ban™ Ileostomy Pouch

A lightweight plastic pouch constructed with the patented Odour-Ban inner liner. Odor-resistant. Requires a separate mounting ring and pouch closure.



**MDW 10-200 (clear)**  
**MDW 10-201 (white)**  
**MDW 10-220 (beige)**

Pouch Size	Length "A"	Width "B"	Capacity
Infant	6-3/4 in./17.1 cm	3-3/8 in./8.6 cm	5 oz./150 cc
Pediatric	7-3/4 in./19.7 cm	4-7/8 in./12.4 cm	10 oz./300 cc
Small	8-3/4 in./22.2 cm	5 in./12.7 cm	14 oz./420 cc
Medium	9-3/4 in./24.8 cm	5-5/16 in./13.5 cm	18 oz./540 cc
Large	11 in./27.9 cm	6-1/8 in./15.6 cm	31 oz./930 cc



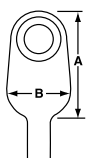
### XTL Odour-Ban™ Ileostomy/Colostomy Pouch

This lightweight plastic Odour-Ban pouch is designed specifically for larger stoma openings (1-3/4" to 2-1/2"). Requires separate XTL mounting ring and pouch closure.



**XTL-MDW-20-210**  
Available in white.

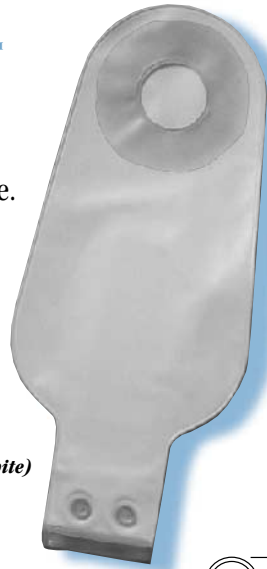
Pouch Size	Length "A"	Width "B"	Capacity
Medium	9-3/4 in./24.8 cm	5-5/16 in./13.5 cm	18 oz./540 cc
Large	11 in./27.9 cm	6-1/8 in./15.6 cm	30 oz./900 cc



# TRADITIONAL *MARLEN Ostomy Products*

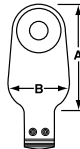
## Zip-Klose™ Odour-Ban™ Ileostomy Pouch

A lightweight plastic Odour-Ban pouch with built-in zipper closure. Eliminates the need for separate clamp(s), clip or rubber bands. Easy to empty, clean and reseal. Requires separate mounting ring.



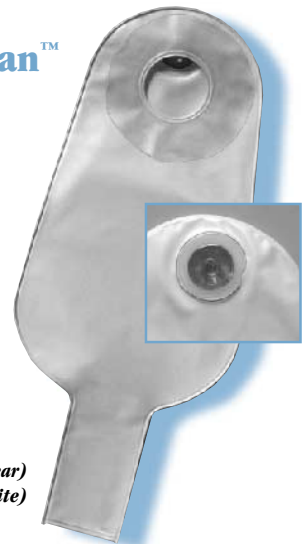
ZK 18-228 (white)

Pouch Size	Length "A"	Width "B"	Capacity
Small	8-3/4 in./22.2 cm	5 in./12.7 cm	14 oz./420 cc
Medium	9-3/4 in./24.8 cm	5-5/16 in./13.5 cm	18 oz./540 cc



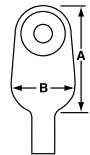
## Gas-Relief™ Odour-Ban™ Ileostomy Pouch

A lightweight plastic Odour-Ban pouch with a Gas-Relief valve permanently sealed into the top of the pouch. Ideal for persons with excess gas accumulation. Requires a separate mounting ring and pouch closure.



GR 22-202 (clear)  
GR 22-203 (white)

Pouch Size	Length "A"	Width "B"	Capacity
Small	8-3/4 in./22.2 cm	5 in./12.7 cm	14 oz./420 cc
Medium	9-3/4 in./24.8 cm	5-5/16 in./13.5 cm	18 oz./540 cc
Large	11 in./27.9 cm	6-1/8 in./15.6 cm	31 oz./930 cc



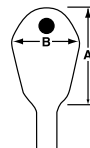
## Neoprene Rubber Pouch

A durable, long-lasting pouch constructed of black neoprene with a white rubber coating on the outside. Requires a separate, semi-flexible mounting ring and pouch closure.



MP-2-S Small  
MP-2-L Large

Pouch Size	Length "A"	Width "B"	Capacity
Small	7-1/4 in./18.4 cm	5-1/4 in./13.3 cm	10 oz./300 cc
Large	10 in./25.4 cm	6-1/4 in./15.9 cm	26 oz./780 cc

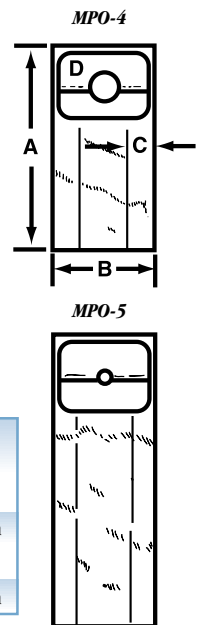


### Also available:

#### Post-Operative Pouches

For ileostomy, colostomy, sinus, cecostomy, wet colostomy (transverse loop) and fistula (fecal, lymph, pancreatic) drainages. Starter hole of 1" can be cut to desired opening.

	Length "A"	Width "B"	Pleat "C"	Tape Surface "D"
MPO-4	12"	6"	3"	4" x 6"
	30.5 cm	15.2 cm	7.6 cm	10.2 cm x 15.2 cm
MPO-5	18"	6"	3-1/2"	4" x 6"
	45.7 cm	15.2 cm	8.9 cm	10.2 cm x 15.2 cm



**Marlen Manufacturing & Development Co.**  
5150 Richmond Road • Bedford, Ohio 44146 • USA  
Phone (216) 292-7060 • Fax (216) 292-9196  
E-mail: info@marlenmfg.com • Web: www.marlenmfg.com